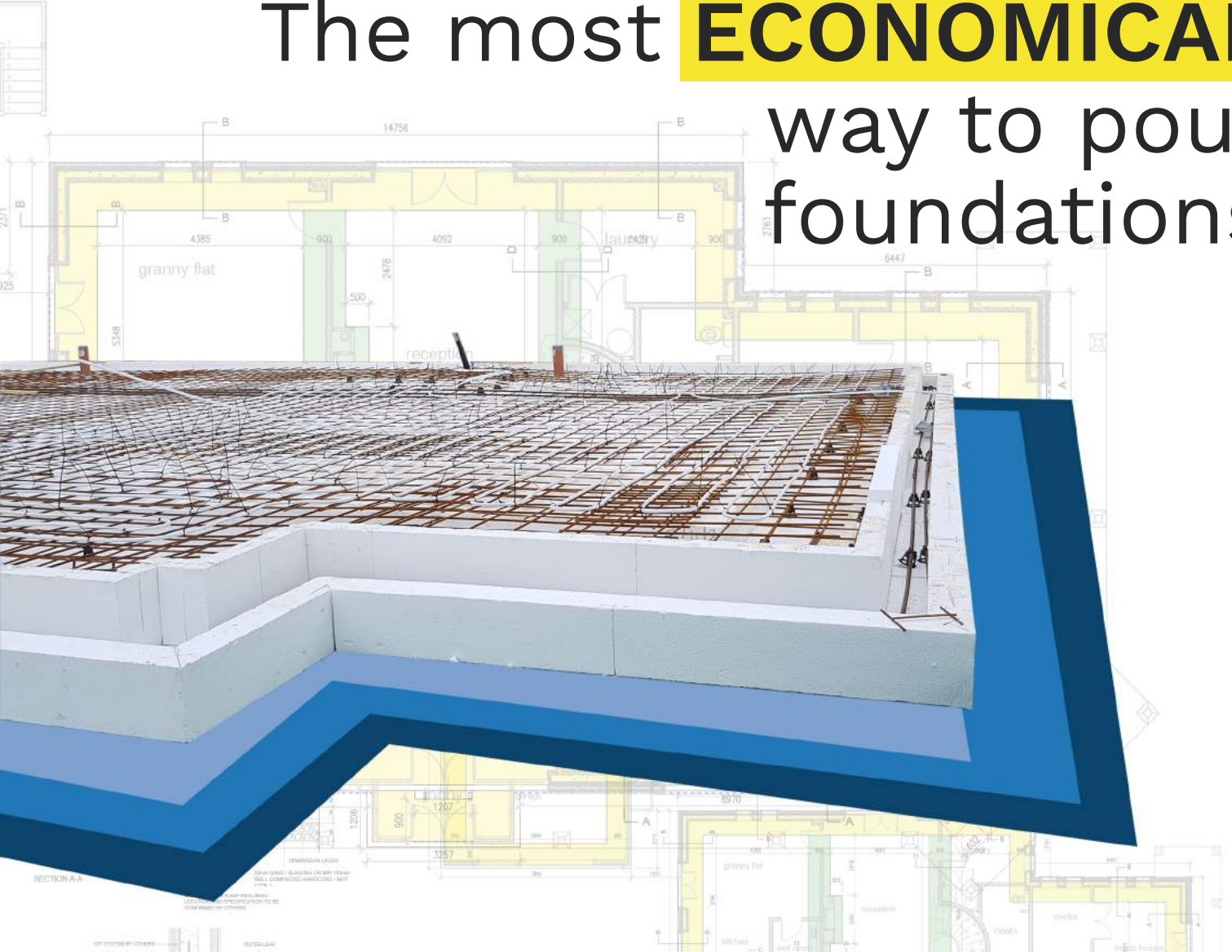


The most **ECONOMICAL** way to pour foundations

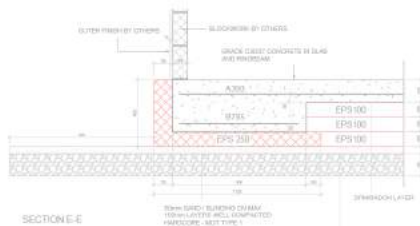


**POURING FOUNDATIONS  
MADE EASY**

**FINISHED FLOOR LEVEL  
ACHIEVED IN ONE CONCRETE POUR**



**BUILD  
LITE**



# What is FUTURE FOUND



Future Found is a trenchless system, manufactured in the UK, that uses High Density Expanded Polystyrene formwork (EPS), designed & cut to suit the individual project design.

The product arrives on site as a fully engineered ready-made formwork that fits together to create a fully insulated concrete structural foundation.

This outline then remains in the ground and concrete poured **in one operation** to create an eco-efficient slab foundation.

**Future Found is suitable for most ground conditions with loads being distributed more evenly - saving money on machine time and spoil removal.**

It is also individually designed by a qualified structural engineer, taking into consideration ground conditions and both line and point loadings.

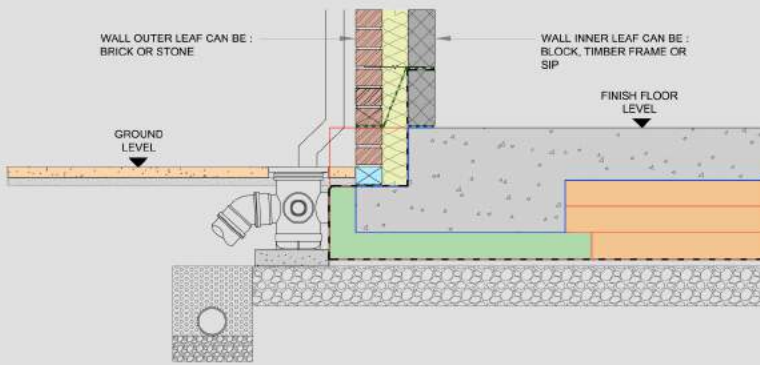


Future Found is a **HIGHLY COST EFFECTIVE** alternative to traditional methods

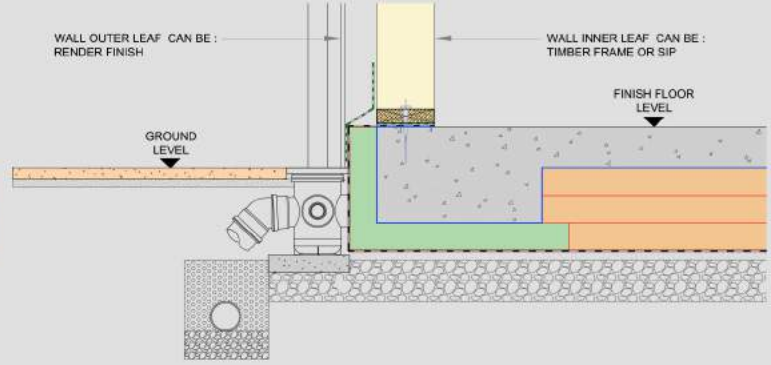
Future Found offers **cost savings of around 30%** on materials and up to **50% savings on labour**. This is thanks to the fact the foundations and ground floors are manufactured site specific and installed in days rather than weeks when using traditional methods.

# Suitable for all building types

## CAVITY WALL CONSTRUCTION



## TIMBER FRAME CONSTRUCTION

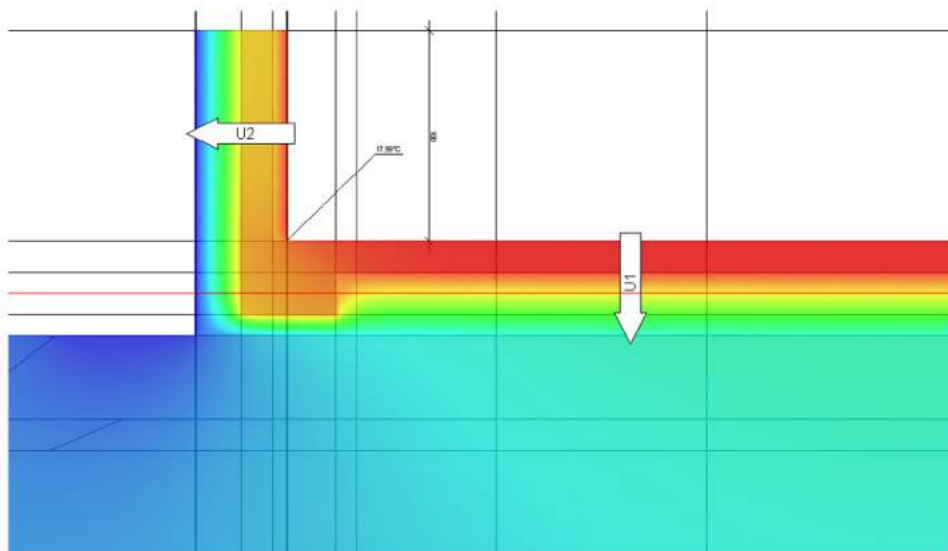


## Key BENEFITS

- ✓ MANUFACTURED OFF SITE DELIVERED JUST IN TIME
- ✓ FULLY ENGINEERED STRUCTURAL DESIGN
- ✓ OFFERS LOW U-VALUES
- ✓ ELIMINATES WALL TO FLOOR COLD BRIDGES
- ✓ UNDERFLOOR HEATING CAPABILITY
- ✓ LESS CONCRETE SAVING TIME & MONEY
- ✓ CREATES A THERMALLY INSULATED ENVELOPE
- ✓ SUITABLE FOR MOST GROUND CONDITIONS

## THE FOUNDATION OF AN ENERGY EFFICIENT BUILDING.

Future Found is precision engineered to provide an ultra-low U-Value and high thermal efficiency.



Thermal bridge – generic wall

## ECO FRIENDLY

Future Found is environmentally friendly and chemically non-aggressive. It is also easily recycled as raw material.



We have also been awarded the British Board of Agrément (BBA) certificate.

Scan QR code to take you directly to our BBA certificate





# HERE IS A STEP BY STEP GUIDE SHOWING HOW FUTURE FOUND CAN DRASTICALLY REDUCE YOUR FOUNDATION COSTS:



## STEP 1 PREPARATION

Clear the top soil to the required level & lay compacted hardcore to the engineers design. Radon sumps & pipe work are laid at this stage. String line the perimeter for ease of alignment.



## STEP 2 INSTALLATION

At delivery, place all the pieces individually, starting with the prefoamed corners layout the exterior, check measurements & squareness against the drawings. Use a laser level to check foundation levels are correct.



## STEP 3

Continue placement of ring beam profiles and trim to ensure a tight fit.



## STEP 4

Place Future Found sheets over the remaining foundation and overlap to achieve insulation continuity. Secure with the supplied pins.



## STEP 5

Install steel through the ring beam profiles and place steel mesh reinforcements according to your specification.

**It's that easy to produce a trench-less and highly insulated foundation base.**



**For a detailed quote,** send us your architectural plans and let us demonstrate how you can save time, materials and costs on your next building project.



Build-Lite (UK) Ltd, Kingsforth Road,  
Thurcroft, Rotherham, S66 9HU  
Phone: **0844 870 6735** | Fax: **0844 870 6745** |  
Email: **sales@build-liteuk.co.uk**

